

**RPS19 Recombinant Rabbit mAb**  
**RPS19 Recombinant Rabbit mAb**  
**Catalog # AP94822**

**Specification**

**RPS19 Recombinant Rabbit mAb - Product Information**

Application	WB, IHC-P, IHC-F, IF, IP
Reactivity	Human
Host	Rabbit
Clonality	Recombinant
Calculated MW	16 KDa
Physical State	Liquid
Immunogen	A synthesized peptide derived from human RPS19
Epitope Specificity	100-145/145
Isotype	IgG
<b>Purity</b>	
affinity purified by Protein A	
Buffer	0.01M TBS(pH7.4) with 1% BSA, 0.02% Proclin300 and 50% Glycerol.
SUBCELLULAR LOCATION	Cytoplasm ; Nucleus, nucleolus
SIMILARITY	Belongs to the eukaryotic ribosomal protein eS19 family.
Important Note	This product as supplied is intended for research use only, not for use in human, therapeutic or diagnostic applications.

**Background Descriptions**

Ribosomes, the organelles that catalyze protein synthesis, consist of a small 40S subunit and a large 60S subunit. Together these subunits are composed of 4 RNA species and approximately 80 structurally distinct proteins. This gene encodes a ribosomal protein that is a component of the 40S subunit. The protein belongs to the S19E family of ribosomal proteins. It is located in the cytoplasm. Mutations in this gene cause Diamond-Blackfan anemia (DBA), a constitutional erythroblastopenia characterized by absent or decreased erythroid precursors, in a subset of patients. This suggests a possible extra-ribosomal function for this gene in erythropoietic differentiation and proliferation, in addition to its ribosomal function. Higher expression levels of this gene in some primary colon carcinomas compared to matched normal colon tissues has been observed. As is typical for genes encoding ribosomal proteins, there are multiple processed pseudogenes of this gene dispersed through the genome. [provided by RefSeq, Jul 2008]

**RPS19 Recombinant Rabbit mAb - Additional Information**

**Target/Specificity**

Higher level expression is seen in the colon carcinoma tissue than normal colon tissue.

**Dilution**

<span class = "dilution\_WB">WB~~1:1000</span><br \><span class = "dilution\_IHC-P">IHC-P~~N/A</span><br \><span class = "dilution\_IHC-F">IHC-F~~N/A</span><br \><span class

="dilution\_IF">IF~~1:50~200</span><br \><span class ="dilution\_IP">IP~~N/A</span>

#### Format

0.01M TBS(pH7.4), 0.09% (W/V) sodium azide and 50% Glyce

#### Storage

Store at -20 °C for one year. Avoid repeated freeze/thaw cycles. When reconstituted in sterile pH 7.4 0.01M PBS or diluent of antibody the antibody is stable for at least two weeks at 2-4 °C.

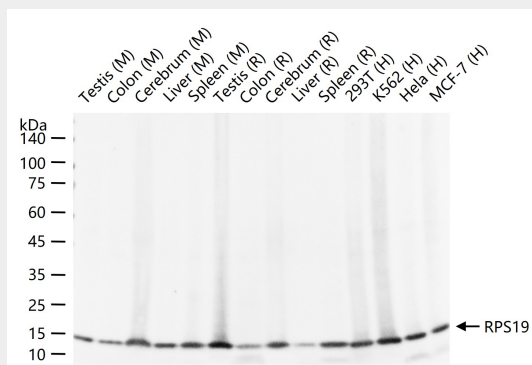
### RPS19 Recombinant Rabbit mAb - Protein Information

### RPS19 Recombinant Rabbit mAb - Protocols

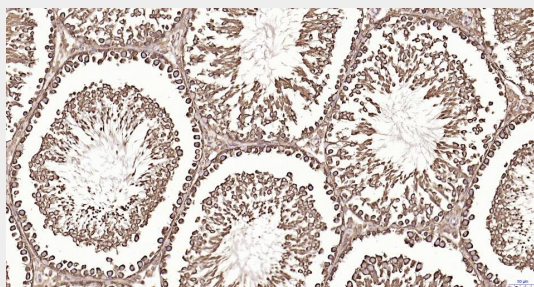
Provided below are standard protocols that you may find useful for product applications.

- [Western Blot](#)
- [Blocking Peptides](#)
- [Dot Blot](#)
- [Immunohistochemistry](#)
- [Immunofluorescence](#)
- [Immunoprecipitation](#)
- [Flow Cytometry](#)
- [Cell Culture](#)

### RPS19 Recombinant Rabbit mAb - Images

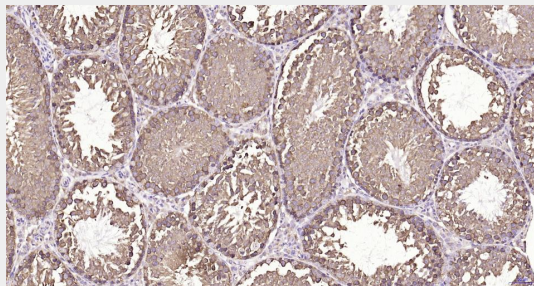


25 ug total protein per lane of various lysates (see on figure) probed with RPS19 monoclonal antibody, unconjugated (AP94822) at 1:1000 dilution and 4°C overnight incubation. Followed by conjugated secondary antibody incubation at r.t. for 60 min.

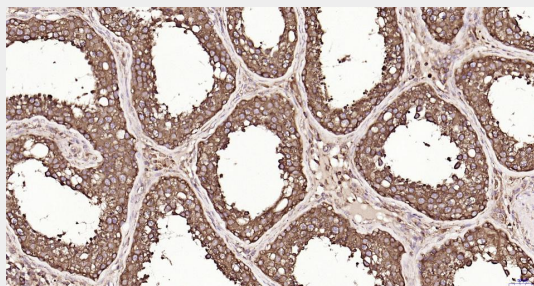


Paraformaldehyde-fixed, paraffin embedded Rat Testis; Antigen retrieval by boiling in sodium

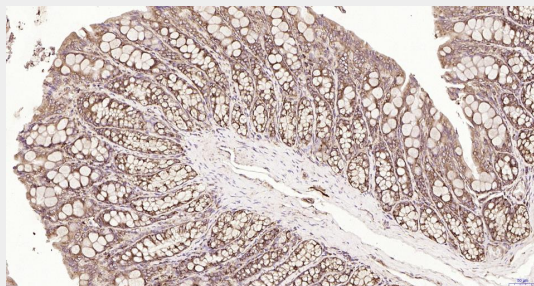
citrate buffer (pH6.0) for 15 min; Antibody incubation with RPS19 Monoclonal Antibody, Unconjugated(AP94822) at 1:200 overnight at 4°C, followed by conjugation to the SP Kit(Rabbit, SP-0023) and DAB (C-0010) staining.



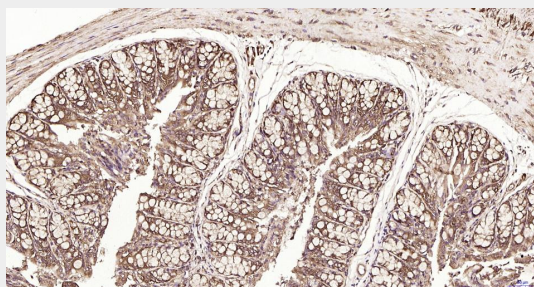
Paraformaldehyde-fixed, paraffin embedded Mouse Testicles; Antigen retrieval by boiling in sodium citrate buffer (pH6.0) for 15 min; Antibody incubation with RPS19 Monoclonal Antibody, Unconjugated(AP94822) at 1:200 overnight at 4°C, followed by conjugation to the SP Kit(Rabbit, SP-0023) and DAB (C-0010) staining.



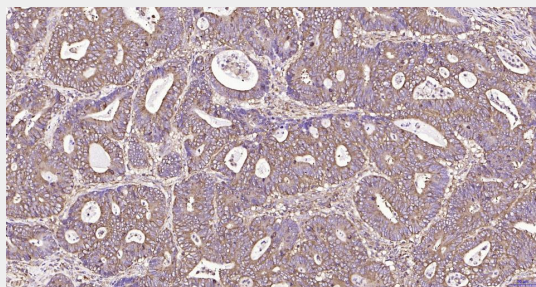
Paraformaldehyde-fixed, paraffin embedded Human Testicles; Antigen retrieval by boiling in sodium citrate buffer (pH6.0) for 15 min; Antibody incubation with RPS19 Monoclonal Antibody, Unconjugated(AP94822) at 1:200 overnight at 4°C, followed by conjugation to the SP Kit(Rabbit, SP-0023) and DAB (C-0010) staining.



Paraformaldehyde-fixed, paraffin embedded Rat Colon; Antigen retrieval by boiling in sodium citrate buffer (pH6.0) for 15 min; Antibody incubation with RPS19 Monoclonal Antibody, Unconjugated(AP94822) at 1:200 overnight at 4°C, followed by conjugation to the SP Kit(Rabbit, SP-0023) and DAB (C-0010) staining.



Paraformaldehyde-fixed, paraffin embedded Mouse Colon; Antigen retrieval by boiling in sodium citrate buffer (pH6.0) for 15 min; Antibody incubation with RPS19 Monoclonal Antibody, Unconjugated(AP94822) at 1:200 overnight at 4°C, followed by conjugation to the SP Kit(Rabbit, SP-0023) and DAB (C-0010) staining.



Paraformaldehyde-fixed, paraffin embedded Human Colon Cancer; Antigen retrieval by boiling in sodium citrate buffer (pH6.0) for 15 min; Antibody incubation with RPS19 Monoclonal Antibody, Unconjugated(AP94822) at 1:200 overnight at 4°C, followed by conjugation to the SP Kit(Rabbit, SP-0023) and DAB (C-0010) staining.

#### **RPS19 Recombinant Rabbit mAb - Background**

This product as supplied is intended for research use only, not for use in human, therapeutic or diagnostic applications.